

# KLEINSCHMIDT INC.

## Department of Homeland Security to mandate electronic data for U.S. Customs and Border Protection...

New Department of Homeland Security (DHS) requirements will mandate that all motor carriers provide U.S. Customs and Border Protection (USCBP) manifest data electronically prior to the truck arrival at the border. A pilot test between USCBP and the trade, and the ACE eManifest software residing at each border location has already begun. The ACE Truck Manifest will go into production shortly after testing is completed.

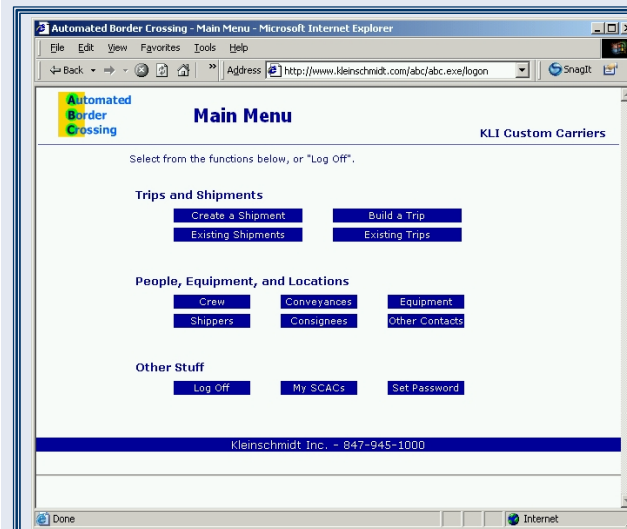
The ACE eManifest process will require motor carriers to provide advance information on each shipment, the conveyance, and all personnel (company or passenger) accompanying the freight when it crosses the border. Conveyance and personnel information can be entered one time and tied to each

crossing by a unique identification number. Information can also be supplied with each shipment. Once in production, motor carriers that arrive at the border without pre-filing the manifest, equipment, and driver information will be denied entry into the U.S. and will have to file the information before the shipment will be processed at the border. This can be done electronically via EDI or entered via a Web portal, like Kleinschmidt's ABC Web Portal.

Kleinschmidt is already certified to send USCBP data via EDI using our well-established MQ connection with U.S. Customs. A number of our customers are currently certified and sending production data to USCBP.

Today, we are pleased to announce the certification by USCBP of a Kleinschmidt Web Portal that allows motor carriers of all sizes to meet the ACE requirements regardless of EDI capability.

For further information and to view Kleinschmidt's ACE eManifest ABC Web Portal demonstration, please email [ABC@kleinschmidt.com](mailto:ABC@kleinschmidt.com).



### ACE eManifest Web Portal

The main menu is where Carriers create the U.S. Customs and Border Control (CBP) manifest data with trip and shipment information required by US Customs prior to a truck arriving at the border.

Various fields of data can be saved, validated, and sent to customs for registration through the Automated Border Crossing (ABC) eManifest Web Portal for use in future trips without needing to be re-entered.

Crew - Drivers and Passengers.

Conveyance - the tractor or motorized vehicle.

Equipment - containers, trailers, etc. towed by the conveyance and containing goods being shipped

Shipment - goods to be shipped. Information is collected about the overall shipment and individual commodities being shipped.

Trip - the collection of crew, equipment, conveyance, and goods being moved cross-border.

A screenshot of the 'Add Trip' form in the ACE eManifest Web Portal. The form is titled 'Add Trip' and is for 'KLI Custom Carriers'. It contains several sections for data entry: 'Carrier' (8KNX- CARRIER KLI 8KNX), 'Carrier Trip ID' (TX789451), 'Customs Trip ID', 'Filing Status' (Preliminary), 'Manifest Type' (Standard), and 'Expected First U.S. Port' (BLAINE, WA (3004)). Below these are sections for 'Conveyance Information', 'Crew Information', 'Equipment Information', and 'Shipment Information', each with a 'Select' button. The 'Shipment Information' section includes fields for 'Shipment Control Number', 'Shipper', 'Consignee', 'Port of Loading', and 'Shipment lading qty'. At the bottom, there are buttons for 'Save to Database', 'Validate', 'Send to Customs', and 'Reset', along with the contact number 'Kleinschmidt Inc. - 847-945-1000'.

Once a trip is built, it can be validated, saved for further updates, and/or sent to Customs for processing.

450 Lake Cook Road ♦ Deerfield IL 60015  
847-945-1000 ♦ 847-945-4619 (Fax)  
[www.kleinschmidt.com/solutions/ace\\_e-manifest.htm](http://www.kleinschmidt.com/solutions/ace_e-manifest.htm)